



# Gilford Solid Waste Center Recycling List



**CARDBOARD**



**PLASTICS (#1, #2, #5 & #7)**



**STEEL/TIN CANS**



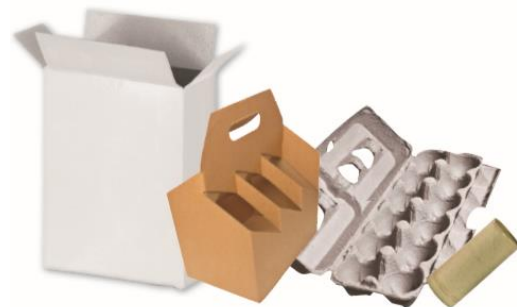
**GLASS**



**ALUMINUM CANS**



**MIXED PAPER**





# Gilford Solid Waste Center

## Separating Recyclables

| MATERIAL       | CAN INCLUDE   | DO NOT INCLUDE  | NOTES  |
|----------------|---|---|--|
| Cardboard      | All corrugated cardboard (incl. clean pizza boxes)  | NO waxed boxes, messy pizza boxes or plastic film packaging   | Please flatten<br>Tape OK<br>Shiny finish OK                   |
| Mixed Paper    | Junk mail, magazines, egg cartons, newspaper, food/cereal boxes, office/school paper, phone books, shredded paper, paperbacks | NO paper towels, tissues, napkins<br>NO corrugated cardboard or waxed boxes (milk/juice cartons or beer/soda boxes) | Staples, paper clips and window envelopes are OK!              |
| Plastics       | #1, #2, #5, and #7<br>Plastic bottles, jars, tubs and containers only   | NO caps, plastic bags, plastic film, styrofoam, bubble wrap, straws, or BLACK plastic                               | Please remove caps<br>Empty food & rinse<br>Look for ♻️ symbol |
| Steel/Tin Cans | Soup, food, coffee cans   | NO paint and aerosol cans   | Please rinse<br>Labels OK<br>Sticks to a magnet                |
| Aluminum Cans  | Beverage cans   | NO aluminum foil, pie plates or pet food cans   | Please rinse<br>Labels OK<br>Will not stick to a magnet        |
| Glass          | Glass bottles and jars  | NO porcelain sinks & toilets, light bulbs, headlights or windshields.   | See attendant for special instructions on items in NO column   |

### GILFORD RECYCLE CENTER

100 Recycle Way, Gilford NH 03249

OPEN Tues – Saturday, 8am – 3:45pm

WEBSITE: [www.gilfordnh.org/recycleright](http://www.gilfordnh.org/recycleright)

EMAIL: [recycle@gilfordnh.org](mailto:recycle@gilfordnh.org)

PHONE: 293-0220

### RECYCLABLES MUST BE SEPARATED BEFORE COMING TO GSWC

*\*\* Please contact DPW with any questions on what is recyclable in the Town of Gilford. Remember **“When in Doubt. Throw it Out.”** Contamination in the recycle stream effects market value of loads. Thank you for your cooperation!*