

# What's FLUSHABLE?

# The DO NOT FLUSH List:



A toddler will tell you that *everything* is flushable... but what you *think* is flushable could be costing you money!

Product labels can be misleading. Some items that claim to be "flushable" can clog sewer and septic systems and can end up costing you a pretty penny.

**"Flushable" does NOT mean it is SAFE for your septic system or sewer.**

"Disposable" items ARE NOT flushable and should be placed in the trash.

The bottom line:  
**ONLY**

Human waste and toilet paper  
**ARE FLUSHABLE**

- Diapers
- Cigarettes
- Paper Towels
- Cotton Swabs
- Tampons



- Condoms
- Dental Floss
- Facial Tissues
- Wipes

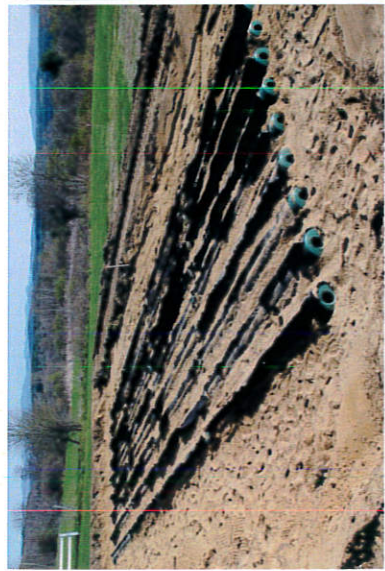




# The Hidden COST



A recent survey shows that towns have spent an average of **\$40,500** dealing with unflushable items in sewer systems.



The replacement cost of a typical residential leach field is **\$6,000-15,000**

# Where Does it GO?



Whether you are on sewer or a septic system, if you live within any of the 10 member communities, the materials you flush end up at the Winnepesaukee River Basin Program (WRBP) Wastewater Treatment Facility in Franklin.

The WRBP is fully community-funded so please help curb *your* costs by only flushing what's flushable!

**Winnepesaukee River Basin Program**  
P.O. Box 68, Franklin, NH 03235  
603-934-4032



29 Hazen Drive, Concord, NH 03301  
[des.nh.gov](http://des.nh.gov)

# What's FLUSHABLE?

